

ERIE EAST BAYFRONT GREENWAY TRAIL PLAN

September 9, 2023





Table of Contents

Acknowledgements	3
Redevelopment Authority for the City of Erie Staff.....	3
City of Erie Staff	3
Steering Committee	3
Funding	3
Visioning Workshop Site	3
Introduction and Project Overview	4
Background	4
Purpose.....	5
Study Area.....	5
Process	6
Data Collection	6
Steering Committee	6
Existing Conditions.....	6
Engaging the Public.....	9
Field Tour and Key Stakeholder Meetings.....	9
Visioning Charrette.....	10
Conceptual Design and Property Analysis.....	12
Initial Iterations.....	12
Property Conditions and Ownership Considerations	15
Phasing Plan and Streetscape.....	17
Cost Estimate and Implementation.....	19
High Level Cost Estimate	19
Implementation Strategy	19
Appendix	21



ACKNOWLEDGEMENTS

Redevelopment Authority for the City of Erie

Aaron Snippert, Executive Director

* Mindy Kiehl, Blighted Property Manager

Jake Huff, Blighted Property Coordinator

RACE Board Member – Ethan Tabkin

City of Erie Staff

Renee Lamis, Chief of Staff

Erin Carey, Neighborhood Planner

Mike Lavery, Demolition Coordinator

Mike Higgins, Code Enforcement Officer

Steering Committee

Chief Dan Spizarny, Erie Police Department

Jason Sayers, City Engineer

Leann Parmenter, Asst. City Engineer

Andy Zimmerman, Bureau Chief of Code Enforcement

* AJ Antolik, Asst. Director of Public Works

Jaqueline Spry, ARPA Coordinator

Sarah Peelman, Arborist & Sustainability Coordinator

Joy Fronzoli, Erie County CZM Planner

*indicates staff no longer with the organization

Funding

Funding for this project was provided by the DEP Coastal Resource Management Program and the City of Erie American Rescue Plan Act Funding.

Visioning Workshop Site The team would like to thank and acknowledge New Life Spirit and Revival Center located at 315, E. 9th Street, Erie PA and Bishop Curtis Jones for opening up their facilities for the visioning workshops and providing support for their neighborhood.

Michael Baker International – Consultant Team





INTRODUCTION AND PROJECT OVERVIEW

The Redevelopment Authority of the City of Erie (RACE) received a grant from the Erie County Coastal Zone Management (CZM) Grant Program and an allocation from the City of Erie’s American Rescue Plan (ARPA) funding to undertake a feasibility study to consider converting up to 50 blighted properties within the city’s lower east side neighborhood into a greenway and trail system. A Greenway or linear park is usually a shared-use path along a strip of undeveloped land, in an urban area, set aside for recreational use or environmental protection. Greenways can provide benefits to humans providing recreation space and benefits to the ecosystem by providing suitable plans and animal habitats among other amenities. The project, referred to as the East Bayfront Trail Plan, was a priority recommendation with Erie Refocused, the City of Erie’s comprehensive plan adopted in 2016.

Background

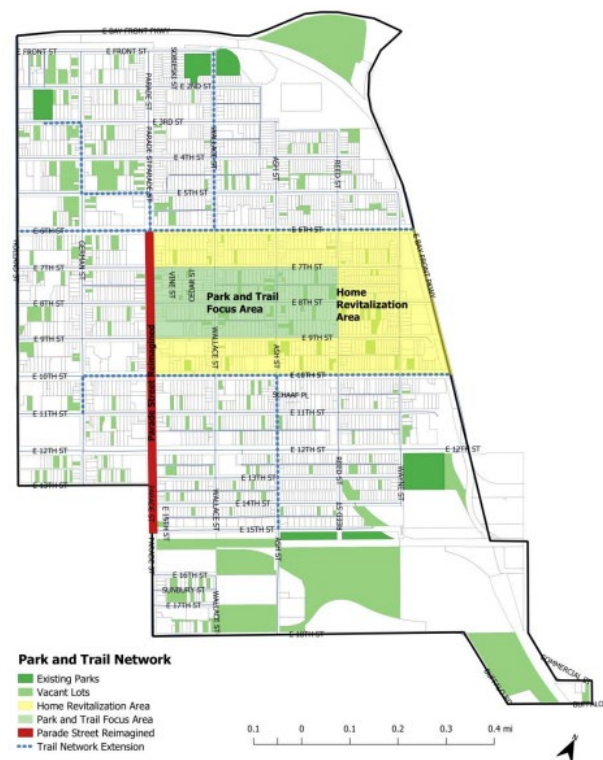
The Redevelopment Authority of the City of Erie requested assistance to develop a plan that would transform a challenged area of the city located within the East Bayfront neighborhood. The plan would include redevelopment of approximately 50 properties that were at a high level of disrepair and showed signs of abandonment by their owners and create an amenity in place of the blighted properties. RACE is the city’s primary agency designated to address blighted properties throughout the city, provide housing repair funding for low- and moderate-income families, and administer the lead abatement program. In addition, RACE has increased their support services for housing rehabilitation due in large part to a generous allocation of ARPA funding provided by the City of Erie to address the gaps in home repair funding throughout the city.

In 2016, the City of Erie adopted its first comprehensive plan, Erie Refocused. The plan calls for strategies and interventions that would help stabilize or strengthen the 17 neighborhood planning areas identified throughout the city. The plan also calls for the revitalization of the city’s downtown core and its two (2) flanking neighborhoods, West Bayfront and East Bayfront. The strategies outlined for the East Bayfront neighborhood includes the following:

- Establish a network of new parks via targeted demolition and land assemblage.
- Re-focus public and private investment around historic landmarks and newly created parks.
- Utilize demolition and vacant land management as job training and development opportunities.

Since the plan was adopted, there have been numerous initiatives supported by both the public and private sector to strengthen the core area of the community. The city’s downtown is seeing unparalleled levels of investment efforts supported by a number of new investors and existing property owners, much of which has been spurred by the development efforts of the newly created community development corporation, the Erie Downtown Development Corporation (EDDC). Gannon University spearheaded investment in the West Bayfront neighborhood through its support for the Our West Bayfront neighborhood group that has been working on numerous programs for housing rehab, homeownership, and parks and streetscape improvements. The Bayfront area continues to grow as

Figure 1. East Bayfront Neighborhood Plan showing the recommendations for a park and trail



development by the Erie Western Port Authority, Erie Events, and Scott Enterprise continues. However, little was being done to address the issues precluding the East Bayfront neighborhood from stabilizing and growing.

In response to this lack of investment within the East Bayfront, the city started working closely with the neighborhood group that was dedicated to revitalizing a portion of the East Bayfront area, Bayfront Eastside Taskforce (BEST), and a new neighborhood-oriented organization, managed by ServErie, that was working toward improving the area south of BEST’s footprint. This partnership created the East Bayfront Neighborhood Plan adopted by Erie City Council in 2019. This plan took a closer look at the strategies outlined in Erie Refocused to determine their feasibility and how best to implement those strategies. The East Bayfront Neighborhood Plan identifies where concentrations of blighted properties exist through a robust property conditions survey tool and analyzed the neighborhood’s access to parks and open space. Through this analysis, the plan focuses on a target area for the greenway/park system within the areas bounded by East 6th Street, East 12th Street, Parade Street and the East Bayfront Connector. Within this 28-block area, hundreds of poor and unsound houses had been abandoned and left in disrepair.

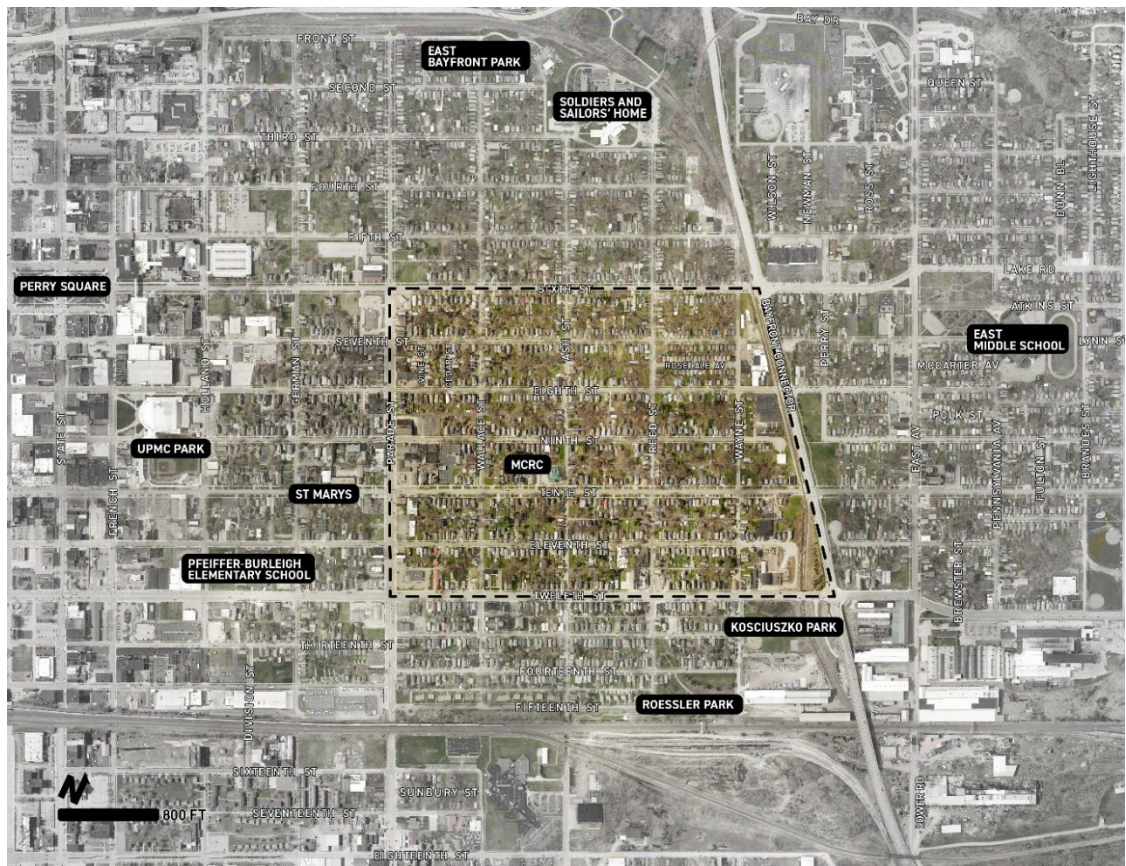
Purpose

The purpose of the Erie East Bayfront Greenway Trail Plan is to enable RACE to plan, design and build the greenway concept recommended in Erie Refocused and the East Bayfront Neighborhood Plan. The planning process involved key stakeholders and residents to identify the specific properties that will be acquired and demolished, design the on street facilities and safe pedestrian crossings, and estimate the cost of the project so that additional funding can be secured.

Study Area

The study area was identified in concert with RACE and the project steering committee and focuses within a smaller target area within the larger 28 block area noted above. See Figure 2.

Figure 2. East Bayfront Greenway Study Area





Process

The process used to develop plan recommendations included reliance on locally collected data, input and guidance from a steering committee of representatives from city departments, feedback from residents and neighborhood groups living and working in the focus area, and an assessment of conditions of housing, vacant land and the road network.

Data Collection

The following types of data collection and analysis were performed beginning in December 2022 to gain a better understanding of existing conditions of the study area including operations of the roadways and status of vacant properties.

- Field tours with code enforcement
- Photo and aerial imagery observations
- Property conditions housing surveys
- Key interviews with BEST Executive Director and the Executive Director of the Eastside Renaissance Corporation
- Key interviews with officers with the Erie Police Department

Steering Committee

Four Steering Committee meetings were held throughout the process of development of the study beginning in December 2022 and continuing through June 2023. The Steering Committee was composed of key staff throughout city departments and outside agencies involved in property maintenance, code issues, roads, parks, administration, funding, and policing efforts. The committee was composed of representatives from the following departments or organizations:

- Public Works
- Traffic Engineering
- City Engineering
- City of Erie Code Enforcement
- Erie Police Department
- Mayor's Office
- ARPA Coordinator
- RACE Board members and staff
- CZM Program Manager

Existing Conditions

Local Context

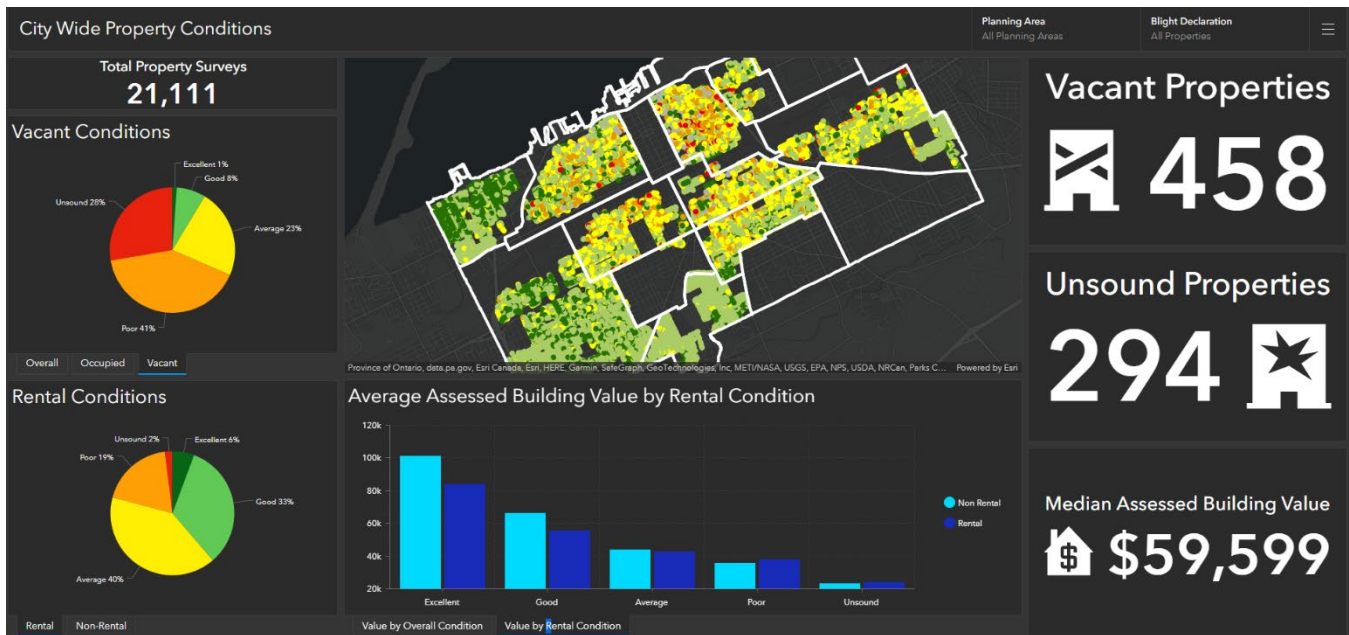
The East Bayfront neighborhood is located east of the city's downtown core and is generally bounded by French Street to the west, East Bayfront Connector to the east, the East Front Street to the north, and East 15th Street and the railroad tracks to the south. It contains five US Census Tracts (4, 7, 8, 13 and 14) and has population of just over 9,000 people and 3,300 households. According to Erie Refocused this neighborhood is classified for stabilization efforts due to its high levels of poverty, low homeownership rates, and depressed home prices.



Greenway Focus Area

The focus area for this study is defined due to the high concentrations of blighted properties and the number of now vacant lots owned by RACE. The blighted properties were identified using the city’s own Property Conditions Survey tool to assist them in long-term planning efforts for their neighborhoods. The survey tool is based on the ICC Property Maintenance Code that the city has adopted and enforces through its Bureau of Code Enforcement housed in the Department of Planning and Neighborhood Resources. All of the properties that were classified as poor or unsound during the initial study that were within the focus area, were reinspected by Code Enforcement Officers to ensure that data was current and that all vacant houses were accurately identified.

Figure 3. Dashboard showing property conditions.



Property Conditions

The original property conditions survey completed by the City Planning Department in 2018 in the East Bayfront neighborhood identified that there were over 450 vacant properties and 294 were classified as unsound. Unsound properties are those that, due to their conditions, need critical repairs to health, safety, and structural elements of the home. Repairs of this nature are typically too costly to repair to a safe state of habitation. The study area for this plan is a sub-area portion of this neighborhood and was found to contain the highest concentrations of vacant and unsound properties within the East Bayfront neighborhood. The survey identified that there were 28 poor/unsound vacant properties and an additional 34 properties have already gone through the blighted property process and were either under the ownership of RACE or the City of Erie’s Land Bank. 21 properties were in the Erie County repository of tax delinquent properties, and another 119 were classified as poor or unsound but are currently occupied and registered as rental properties. It was unclear at the time of this report if the properties classified as rentals were active rentals or were simply still listed in the registration database. Until the rental and occupancy status of the units could be verified, these properties were not in consideration to become part of the greenway trail system.

During the planning process, Code Enforcement Officers assigned to this neighborhood along with the City’s Demolition Coordinator, reassessed each property within the plan’s focus area. From that updated information, the



project team selected a path that would meet the objectives of the study, meet the needs of RACE and meet the manageable size requirements to effectively execute and implement the plan within a reasonable cost threshold.

ENGAGING THE PUBLIC

Understanding the needs and concerns for the residents that would utilize the new greenspace was one of the most important design criteria for the trail network. The project team worked with residents to determine the priority property and streetscape design that would provide the most benefit to the community. In order to get necessary feedback and input, three (3) resident led visioning workshops were held adjacent to the focus area. In addition, key stakeholder interviews were conducted with organizations working on community development initiatives in and around the focus area.

Field Tour and Key Stakeholder Meetings

Field Tour: The Michael Baker team along with representatives from RACE, City of Erie Planning, and Code Enforcement performed field visits to the focus area to gauge the condition of some of the priority properties, assess road conditions and identify opportunities to make vital connections that would ultimately form the greenway network. This also helped the team prepare for the Visioning Workshops that would be held with residents.

BEST: The Michael Baker team met with Jeremy Bloeser, Executive Director of the Bayfront Eastside Taskforce (BEST). Although the BEST neighborhood footprint is outside of the boundaries of the study area they do border each other and it was necessary to understand where potential connections existed and where there was alignment of the vision for the neighborhoods. Mr. Bloeser noted the importance of ensuring safe connections to Parade Street as it is an employment and retail hub for the neighborhood, the idea of connecting the greenway to potential future projects focused on recreating historic forts located within the BEST neighborhood, and that residents' connection with the bluff and eventually access to the bayfront were a all priority.

East Side Renaissance ESR: Tim Shannon, Executive Director for ESR, met the Michael Baker team during the second round of visioning workshops. He provided valuable insight into the development that his group is undertaking involving key properties on Parade Street and wanted to ensure that accessibility and connectivity were made with their efforts. Mr. Shannon shared the boundaries of their focus area and that they look to go as far north as East 6th Street with their redevelopment efforts which showed great alignment with the early concepts of the greenway plan.



Picture 1. Michael Baker International team, Redevelopment Authority of the City of Erie, and City of Erie Code Enforcement tour of the focus area.

Visioning Charrette

The Design Hub, a Michael Baker niche urban design team, worked side by side with residents to develop the concept plan for the East Bayfront Greenway and Trail. The team uses sketching techniques to discuss ideas and illustrate issues that are raised during the planning process so that people can react to them in real-time. This technique was also used during the project Steering Committee meetings that were held throughout the project.

Visioning Charrette 1.0: The first round of visioning workshops was held in December 2022 and scheduled at different times of the day to provide opportunities for people who work or work differing shifts the ability to attend. Flyers were handed out by the City of Erie Love Your Block volunteers to residents living in the neighborhood and RACE and the city posted the meeting invitation on their websites. The workshops were held at a convenient location near the focus area, New Life and Spirit Revival Center. Over the 2 sessions, more than 40 people attended and provided valuable feedback and advice to the Michael Baker team. The issues and ideas that were raised included the following:

- Need to plan for where residents in the neighborhood want to go, where they would naturally walk including Parade Street, East 6th Street, Pfiefer Burleigh School, access to the trail on East Bayfront Connector.
- Access to bus stops is important.
- Closing Ash Street may cut off the north street but not for bike/pedestrians.
- One-way streets will make redirecting at intersections problematic.
- Residents supported mid-block crossings to connect to parks and green space.
- Review Bayview Park as a model.
- Motorized scooters and bikes are a concern.
- Lighting that dim but brighten with motion sensors may work. Need lighting for security and more eyes on the park.
- Native plantings are important.
- Casual seating for conversations.
- Connect to existing bike lanes on the Parkway. Safer crossing at East 6th Street.
- Need to consider creating public space that is now used by homeless people. How do we address this? No tent city.
- ADA, Accessibility is a concern particularly with all of the crossings.
- Make sure there is clear distinction between the greenway and people's back yards by way of fencing and landscaping.
- Ensure that the park does not cut off the neighborhood, like the Bayfront.
- Connections with adjacent initiatives such as ESR, Byrn Grant, BEST.
- Designs need to look at how to encourage people to interact with each other.
- Bump outs need to accommodate bikes.



Figure 4. Visioning Charrette invitation in spanish

- Look at properties along Ash between 12th and 10th. There are other properties that are in poor shape.

The Michael Baker team used this feedback to reimagine the greenway and address areas of concern particularly with existing roadways. They heard how important the connecting streets were to the residents and how to incorporate these into the overall design.

Visioning Charrette 2.0: After additional input was gathered from the Steering Committee and RACE regarding priority properties, road safety, and public safety access, the design team met with residents at a follow up workshop held in February 2023. This meeting was held specifically with residents who lived in the focus area to hear their concerns about the direct impact the greenway may have on their homes. Approximately 10 local residents attended this meeting and provided valuable feedback to the conceptual design that the team and the Steering Committee reviewed. Concerns over separation of the public versus people’s private yards were raised again, as was how the greenway area would be policed and monitored. Most participants did not favor closing streets but did want better pedestrian and bicycle facilities throughout the area. They supported the idea that the greenway connects Parade Street, the elementary school, and East 6th Street and the East Bayfront Connector.

Picture 2. First Visioning Charrette meeting with stakeholders



Picture 3. Second Visioning Charrette meeting with residents





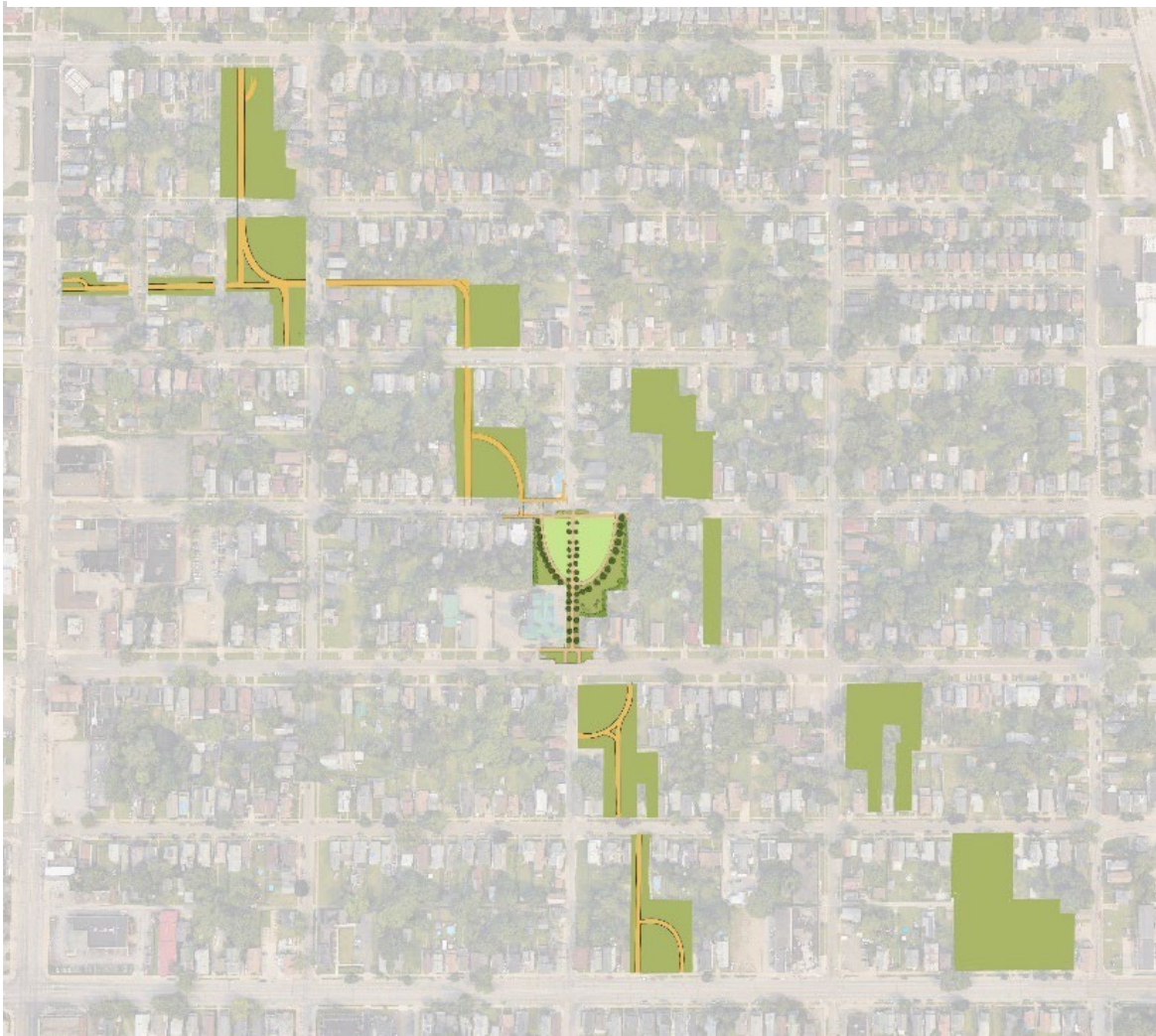
of vacancies in the study area, the selection of parcels for the greenway attempts to correlate with general pedestrian flow to make pedestrian travel safer and more enjoyable. With the Multi-cultural Resource Center (MCRC) located at 10th and Ash Street being the main institutional hub and center of the neighborhood, it made sense to have the “legs” of the greenway cross at this connection point.

Issues raised during previous discussions with residents and the Steering Committee that helped guide the design included:

- Roads, alleyways, and crossings need to be well designed with a focus on pedestrians.
- Safe ways and crossing for kids and people with disabilities is important.
- Crime reduction techniques need to be incorporated.
- Property acquisition and timing will need to be well managed
- Provide access to bus stops.
- Protect adjacent properties from public/spillover use.
- Don't want this to draw illicit activity.
- Native plantings, good lighting, and security cameras.
- Create spaces that encourage community and conversations.

Figure 6 on the next page is an early conceptual drawing of the greenway that shows a defined center at Ash Street and East 10th Street. From this central focal point, the team then found ways to utilize property acquisition to make connections to Parade Street to the west, the Bayfront Connector to the east, and East 10th street where neighborhood assets exist including the Multi-cultural Resource Center, Pfeiffer Burleigh Elementary Schools, and a bus stop.

Figure 6. Early Greenway Concept linking over 30 parcels together to create a greenway.





Property Conditions and Ownership Considerations

Challenges of developing a plan in an urban environment were numerous. The greenway was intended to be designed to replace blighted and abandoned properties that were not currently under the control of one entity. In order to realize the vision for the greenway, a full property assessment and survey of the surrounding properties, conditions and ownership status was critical. RACE and the City of Erie wanted to ensure that the greenway improved the condition of the area without displacement of people. The following reflect the types of survey work that were performed with the assistance of the city and RACE staff.

Figure 7. Property analysis within the focus area





Although rental properties were not considered as part of the greenway system, these were included in the analysis. Future research should be performed on the city’s rental registration program to ensure that rental units are regularly inspected and those that are not occupied and are in poor condition, should be required to renew their Rental Registration and the units be brought up to habitable standards.

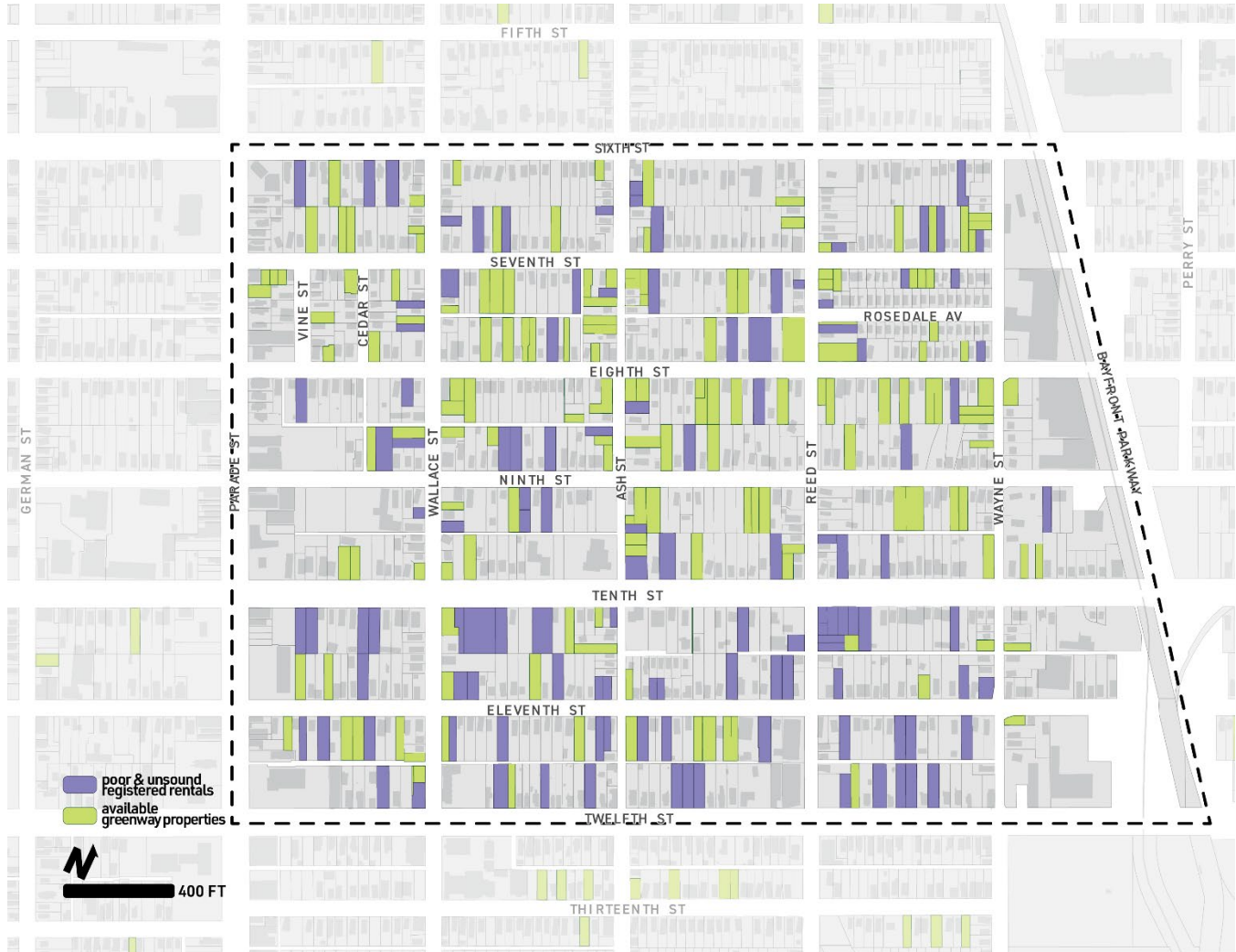


Figure 8. Poor and Unsound properties

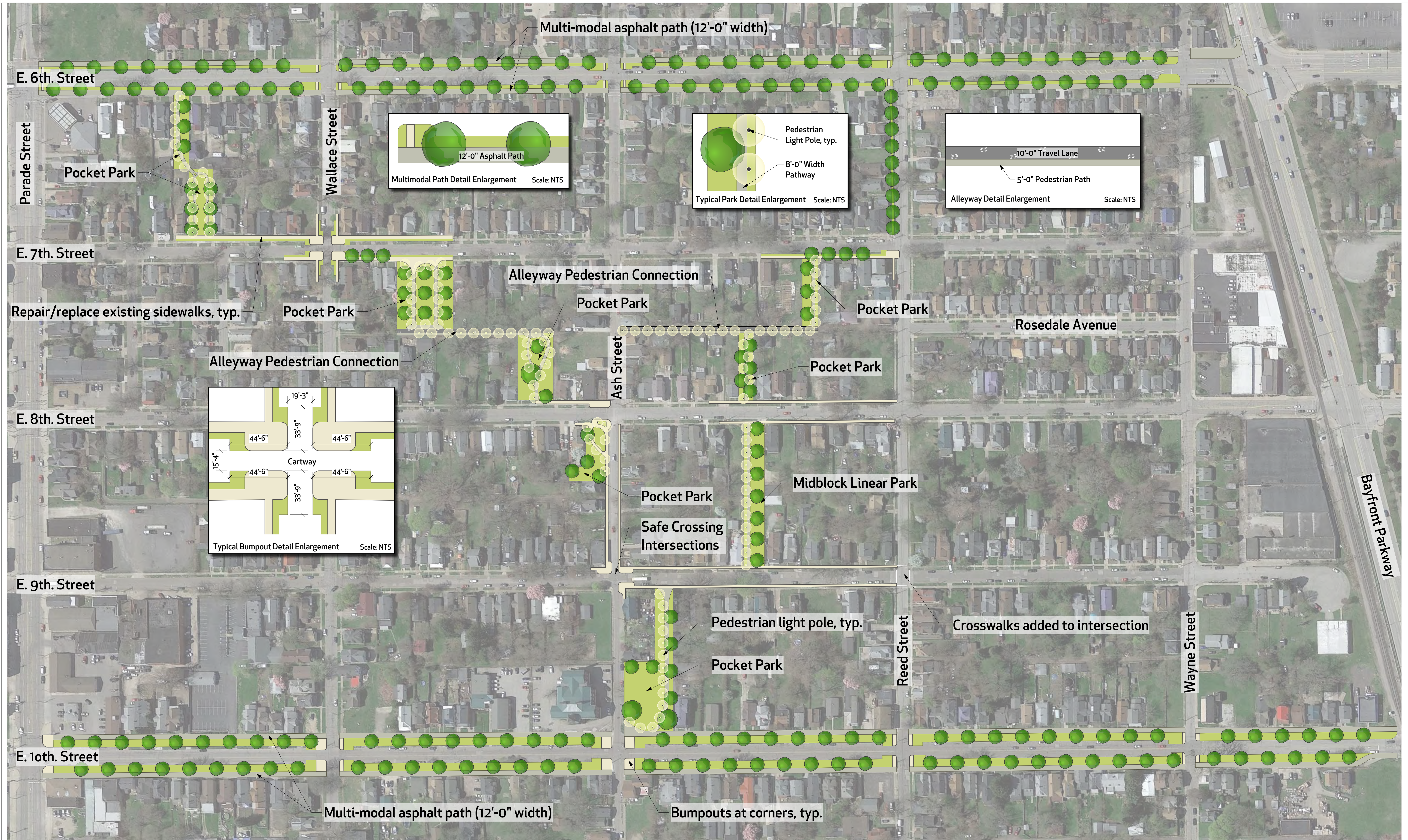


Phasing Plan and Streetscape

The Preliminary Plan for the East Bayfront Greenway was finalized through discussions with the City of Erie, the Steering Committee and RACE. Considerations were given to safe, pedestrian crossing and sidewalks along all major corridors where the greenway would traverse as well as the priority properties either owned by RACE or the City's Land Bank, or in latter stages of the blight process. Emphasis on providing enhanced pedestrian and bike access along E. 6th Street and E. 10th Street was made to provide connections to the larger network of bike facilities planned for in the city's recently adopted Active Transportation Plan. Pedestrian enhancement will also impact the safety and walkability to the East Middle School located northeast of the focus area. E. 10th Street was carefully planned to provide safe connections with the Pfeiffer Burleigh Elementary School located just southwest of the focus area.

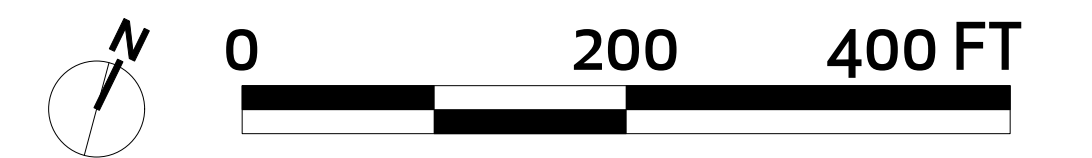
As you can see from the plan on the next page, traffic calming measures such as bulb-outs at key intersections are used to provide shorter crossing distances for pedestrian, 12-foot-wide, ADA-compliant, asphalt paths are proposed along E. 10th and E. 6th Street to allow for both bike and pedestrian usage separated from vehicular traffic. Additional amenities are noted below:

- Pocket parks are used to create meaningful spaces for play or passive greenspace. Although the plan shows conceptual layouts, these spaces will be designed through direct resident input, but the plan provides a “blank canvas” for those future developments to occur.
- Streets and alleyways are critical components to the greenway system as they are the only opportunities to connect the spaces and pocket parks created through targeted demolition of blighted properties.
- Pedestrian style lighting is used throughout the greenway to ensure that public areas are well lit and provide a sense of safety. These should be considered with respect to adjacent neighbors and homes located close to the greenway. Full cut-off, LED lighting that is motion detected should be considered.
- Paved pathways should be planned throughout the greenspace to build a continuous path for non-motorized users to move throughout the neighborhood.
- Unlike concrete, the asphalt material flexes and contracts with the freeze-thaw cycle.
- Native, salt-resistant plantings can provide habitat, abate stormwater, and provide aesthetic benefits to the natural landscape in the neighborhood.
- Landscaping along the greenway would adhere to Crime Prevention Through Environmental Design principles and leave sight lines clear to discourage nefarious activities and allow for “eyes on the greenway.”



Legend

- Tree
- Pedestrian Light Pole
- Asphalt Path
- Concrete Sidewalk
- Lawn Area
- Bike Lane



ERIE EAST BAYFRONT GREENWAY



COST ESTIMATE AND IMPLEMENTATION

The following High Level Cost Estimate and Implementation Strategy is based on the Phasing Plan and Streetscape amenities noted above. Costs will be dependent on the timing of the project and do not include cost of utility impact within the right-of-way, if any.

High Level Cost Estimate

Table 1 – Opinion of Probable Construction Cost (See additional cost detail provide in the Appendix)

DESCRIPTION	UNIT	UNIT COST	QUANTITY	CONSTRUCTION COST	OTHER COST*
UPDATED PEDESTRIAN CROSSING**	EA	\$25,000.00	2	\$50,000	\$15,000
CONCRETE PAVING (SIDEWALK)	SF	\$10.68	47859	\$511,100	\$178,885
CONCRETE CURB	LF	\$50.00	16054	\$802,700	\$280,945
SEEDING	LS	\$17,700.00	1	\$17,700	\$6,195
BENCHES	EA	\$1,400.00	28	\$39,200	\$13,720
TREES	EA	\$60.00	220	\$13,200	\$4,620
PEDSTRIAN LIGHTING	EA	\$3,500.00	114	\$399,000	\$139,650
ROAD STRIPING	SF	\$4.50	849	\$3,821	\$1,337
ASPHALT PAVING	SF	\$4.59	8499	\$39,000	\$13,650
**PROPERTY ACQUISITION AND CLEARANCE	LS	\$177,200.00	1	\$177,200	\$0
CONSTRUCTION TOTAL				\$2,052,921	
OTHER TOTAL				\$654,002	
GRAND TOTAL				\$2,706,923	

*Other costs include non-construction costs such as contracting, placement, overhead, mobilization, and inflation

* Other cost include ADA compliance design

** Property Acquisition and Clearance Costs are based on information provided by RACE

Implementation Strategy

The next steps for this project include the following:

1. RACE should continue to acquire all of the properties within the first phase of the project. Many of which are either owned by RACE or are under the authority of the City of Erie’s Land Bank.
2. RACE will need to coordinate with the City of Erie Public Works Department for improvements within the road right of ways and alleyways will need to be coordinated with the City of Erie.
3. Groundwork Erie is a new non-profit group dedicated to working on projects that improve the environment within the city. They have offered to support this project by direct outreach to residents as



the greenway is being designed and built, assist with clearance of overgrown lots, support activation of key areas of the greenway.

4. Although a large portion of this project is already funded through the city's direct allocation of ARPA, additional funding will be needed to complete the project in its entirety and to prepare for future phases. A mix of grant funded programs and local foundational giving should be explored to diversity the streams by which to fully realize the project. The following are a few funding options that should be explored:

- PA DCED – Keystone Communities Program
- PA DCED – Neighborhood Assistance Program
- Erie County Land Bank
- City of Erie CDBG
- Erie County Greenway program
- PA DCED – Greenways, Trails, and Recreation Program
- DCNR – C2P2 program
- DCNR - Trail Grant program
- PennDOT – TASA, Multi-modal programs
- PA DCED – CFA Multi-modal Transportation Fund program



APPENDIX

ERIE EAST BAYFRONT GREENWAY OPINION OF PROBABLE CONSTRUCTION COST					
DESCRIPTION	UNIT	UNIT COST	QUANTITY	CONSTRUCTION COST	OTHER COST*
UPDATED PEDESTRIAN CROSSING**	EA	\$25,000.00	2	\$50,000	\$15,000
CONCRETE PAVING (SIDEWALK)	SF	\$10.68	47859	\$511,100	\$178,885
CONCRETE CURB	LF	\$50.00	16054	\$802,700	\$280,945
SEEDING	LS	\$17,700.00	1	\$17,700	\$6,195
BENCHES	EA	\$1,400.00	28	\$39,200	\$13,720
TREES	EA	\$60.00	220	\$13,200	\$4,620
PEDSTRIAN LIGHTING	EA	\$3,500.00	114	\$399,000	\$139,650
ROAD STRIPING	SF	\$4.50	849	\$3,821	\$1,337
ASPHALT PAVING	SF	\$4.59	8499	\$39,000	\$13,650
PROPERTY ACQUISITION	LS	\$177,200.00	1	\$177,200	\$0

*Other costs include non-construction costs such as contracting, placement, overhead, mobilization, and inflation.

**Other cost includes ADA compliance design

CONSTRUCTION TOTAL =	\$2,052,921
OTHER TOTAL =	\$654,002
GRAND TOTAL =	\$2,706,923

S.O. No.

ERIE EAST BAYFRONT GREENWAY COST ESTIMATE

Q:\Projects\OTHER\City of Erie\2022 RACE East Bay Front Greenway Trail_PN 192873\200 Deliverables\Final Study\Erie East Bayfront Greenway Cost Estimate.xlsx]Light Poles Drawing No.

Computed By: JLH

Date: 07/12/23

- Item: <https://www.lightmart.com/light-poles/steel-light-poles/> \$600.00 /ea
- 0910-0154 Pole Foundation, Type FC** \$1,200.00 /ea
- 0910-5055 2" Direct Burial Conduit** \$10.00 /LF
- 0910-4110 AWG 1/0 Underground Cable, Copper** \$8.00 /LF
- 0910-2803 250-Watt High Pressure Sodium Lumin:** \$800.00 /EA

			Wiring Length	Wiring Cost	Pole Cost	Foundation Cost	Light Fixture Cost	Total Cost per Light Pole
			(LF)	(EA)	(EA)	(EA)	(EA)	
			50	\$900.00	\$600.00	\$1,200.00	\$800.00	\$3,500.00

Assume 50' total wiring length to connect to existing electric

S.O. No.

ERIE EAST BAYFRONT GREENWAY COST ESTIMATE

Q:\Projects\OTHER\City of Erie\2022 RACE East Bay Front Greenway Trail_PN 192873\200 Deliverables\Final Study\Erie East Bayfront Greenway Cost Estimate.xlsx]Road Striping

Drawing No.

Computed By JLH

Date:

07/12/23

Item No. 0960-0001 4" White Hot Thermoplastic Pavement Marking

\$1.50 /LF

Handicap Symbol	Road Striping Area	Striping Length	New Line Cost
(EA)	(SF)	(LF)	
1	849	2547	\$3,820.50

\$4.50

S.O. No.

ERIE EAST BAYFRONT GREENWAY COST ESTIMATE

Q:\Projects\OTHER\City of Erie\2022 RACE East Bay Front Greenway Trail_PN 192873\200 Deliverables\Final Study\Erie East Bayfront Greenway Cost Estimate.xlsx\Asph Drawing No.

Computed By JLH

Date: 07/12/23

Item No. 0203-0004	Class 1B Excavation	\$40.00 /CY
0313-0020	SUPERPAVE ASPHALT MIXTURE DESIGN, BASE COURSE, PG 58S-28, < 0.3 MILLION ES/	\$15.00 /SY
0350-0106	SUBBASE 6" DEPTH (NO. 2A)	\$15.00 /SY
0460-0001	Bituminous Tack Coat	\$0.25 /SY

Excavation Depth (ft)	Area (SF)	Area (SY)	Volume (CY)	Binder Course Cost	Subbase Area	Tack Coat Area	Excavation
0.750	8499	944.33	236.083333	\$14,165.00	\$14,165.00	\$236.08	\$9,443.33

Total Cost: \$39,000.00 \$4.59

S.O. No.

ERIE EAST BAYFRONT GREENWAY COST ESTIMATE

Q:\Projects\OTHER\City of Erie\2022 RACE East Bay Front Greenway Trail_PN 192873\200 Deliverables\Final Study\Erie East Drawing No.

Computed By JLH

Date: 07/12/23

Item No. 0960-0001 **4" White Hot Thermoplastic Pavement Marki** \$2.00 /LF
Flashing Pedestrian Sign \$10,000.00 /EA
ADA Warning Surface \$500.00 /EA

	ADA Warning Surface	ADA Warning Surface Cost	Line Length	Line Cost	Flashing Signs	Sign Cost
	(EA)		(LF)		(EA)	
	8	\$4,000.00	250.00	\$500.00	2	\$20,000.00

Total Cost: \$25,000.00

Assume 250' of 1' wide white hot striping at \$2/LF and two flashing pedestrian signs at \$10,000 each

Rental	Notes	Phase	Cost of Acquisition	Cost of Demolition	Misc Fees (legal, filing)	
Y	commercial/2 unit rental; last inspection 10/15/2007 Corner lot across from MCRC on NE corner of Ash and 10th	1	\$10,000	\$6,500	\$3,000	
N	Owner Occupied	1	\$5,000	\$8,000	\$3,500	
Y		1				
Y	Being acquired by RACE	1	\$19,000	\$12,000	\$3,000	
N	Parklet	1				
N/A		1	\$4,000		\$3,000	
N/A		1	\$4,000		\$3,000	
N/A		1	\$200		\$3,000	
Y		1	\$57,000	\$7,000	\$3,000	
N/A	Parklet	1			\$3,000	
N/A	Now Vacant	1			\$3,000	
N	Parklet	1			\$3,000	
N/A	Now Vacant	1	\$4,000		\$3,000	
N/A		1	\$4,000		\$3,000	
	Total Phase 1		\$107,200	\$33,500	\$36,500	\$ 177,200

December Schedule

Project	<u>Erie East Bayfront Greenway</u>	Project Manager	<u>Kathy Wyrosdick, AICP</u>
Report as of	<u>December 2, 2022</u>	Client Contact	<u>Aaron Snippert</u>

TASK ONE - PROJECT MANAGEMENT, DATA COLLECTION, KICK OFF WORK SESSION

Task 1.1 - Data Collection and Assessment

- 12/5 - 12/9 Share all GIS files and property acquisition information
- Work on Public Outreach Plan (see 1.2)

Questions?

- What other information is available?
 - Property Conditions
 - Blighted properties
 - Ownership information
 - 6th to 12th, Parade to Wayne
 - Notes from Client: Guy from California bought 15 properties. Steve L. said they could not be pulled from Repository. Liz A knows and let Council know but it continued. Lowered assessed value on all of them.
 - Blighted properties list. Alleyways can help take the burden off of PW.
 - Mike Higgins has a list of unsound and will update that list. We need that one too. Excel list
- Contact for this information? Erin Carey

Task 1.2 - Public Outreach Plan

- 12/5 - 12/9 Finalize Public Outreach Plan
- Design project logo and tag line
- Design outreach material for printing
- Define social media strategy
- 12/12 - 12/16 Public Outreach to residents

Questions?

- Location for Design Charettes? First Option MCRC and Aaron Snippert will check on this and let Kathy know, if not then Kathy will reach out to New Spirit Life Church (Curtis Jones Sr. church on E.
- Door to Door invitations and/or other techniques?
 - Target Invitation to Local Champions who can bring a friend or neighbor with them: Karen's (Liz) Family, Stephanie, Count Me In (Ray), Sisters (Cindy and Teresa), Tim Shannon (ERG).
 - Fliers (Love Your Block will help pass out fliers the week of December 12th, note they will be having their end of the year celebration that week)
 - A few Sisters who live at 10th and German (Cindy & Teresa) may help pass out fliers. Erin will ask them.
- Social media options, RACE, City of Erie, Love Your Block. Project can use their Facebook and livestream and post information about the project.

- Community Liaisons involvement? Erin will reach out to them, may be able to connect with New American Council.
- Who are the Key Staff to include in check in meetings? Aaron Snippert and Erin Carey = (Aarins)
- Steering Committee Members
 - Aaron Snippert, RACE
 - Erin Carey, Neighborhood Planner
 - Dave Forest, Planning Director
 - AJ Antolik, Asst. Public Works
 - Jason Sayers, City Engineer
 - Mike Higgins, Code Officer
 - Mike Lavery, Demolition Officer
 - Joy Fonzoli - CZM
 - Mayor's office representative - Jackie Spry?
 - RACE Board - Ethan

Interview - Jeremy Bloeser and Tim Shannon

Task 1.3 - 2 Day Kick-Off Work Session

- 12/20 - 12/21 Kick Off Work Session
- Proposed Schedule:

Tuesday, 12/20 Room 500		Wednesday 12/21 Room 500	
9 AM	Meet with Key Staff	9:30 am	Prep for Steering Committee
10 - 12	Tour focus area, engage residents with fliers	10 - 11:30 AM	Steering Committee Presentation and Design Concept Discussion (<i>Leon can meet virtually</i>)
12 - 1:30	Working Lunch and Meeting Prep with Public Works (Engineer and Traffic Engineer)	12 - 1 pm	Lunch
2 pm - 3 pm	Interview Jeremy and Tim	1:30 pm - 2:30 pm	2 nd Resident Design Charrette
3:30 p - 5 pm	Extra time for focus area review and design concept refinement (<i>Leon available for in person or calls</i>)	3 pm	Debrief with staff
5:30 pm - 7 PM	Resident Design Charrette		

Task 2. Draft Concept Plan - January 2023

Task 3. Final Concept Plan and Cost Estimate - February, 2023

Task 4. Implementation Plan and Final Report - March, 2023

2-Day Kick Off Schedule and Agenda

2 Day Schedule

Tuesday, 12/20 Room 500		Wednesday 12/21 Room 500	
9 AM	Meet with Key Staff, City Hall Room 500	9:30 am	Prep for Steering Committee
10 - 12	Tour focus area, engage residents with fliers	10 - 11:30 AM	Steering Committee Presentation and Design Concept Discussion (<i>Leon can meet virtually</i>)
12 - 1:30	Working Lunch and Meeting Prep with Public Works (Engineer and Traffic Engineer)	12 - 1 pm	Lunch
2 pm - 3 pm	Interview Jeremy and Tim, BEST Office	1:30 pm - 2:30 pm	2 nd Resident Design Charrette
3:30 p - 5 pm	Extra time for focus area review and design concept refinement (<i>Leon available for in person or calls</i>)	3 pm	Debrief with staff
5:30 pm - 7 PM	Resident Design Charrette		

Tuesday, December 20th

9:00 AM Agenda – Meet with Key Staff

Key Staff: Aaron Snippert, RACE and Erin Carey, City Planning

Location: Room 500

1. Review of 2-day schedule
2. Clarify focus area and data needs
3. How will property identification be handled throughout the project? Process for prioritizing properties.
4. Context of housing
5. Overview of property acquisition process for MBI team
6. Expectations for Implementation and Phasing Plan. Roads, sidewalks, crossings, Park design by lot, by block etc.

10 - 12 AM Agenda – Tour focus area

Staff for Tour? Mike Higgens, CEO, Mike Lavery, Demo, Aaron Snippert and Erin Carey

Location: Focus Area

1. Walk the focus area
2. Look at specific properties already owned by RACE or in the blight process
3. Analysis of roadways and alleyways, sidewalk, public lighting, public infrastructure, parking challenges.
4. What will remain, which homes and types of homes
5. Bring fliers to handout and talk with residents as needed

11:30 – Kathy needs to pick up lunch

12 AM – 1:30 PM Agenda – Working Lunch

Staff Attending: Joy Fronzoli, CZM Coordinator invited. Invitation for Public Works

Location: Room 500. Erin and Aaron

1. Time for MBI team to begin concept design and prepare for Charrette

2 PM – 3PM Interview Jeremy Bloeser BEST and Tim Shannon ESR

Attending: MBI team

Location: BEST Office 231 Parade Street, Erie

1. Overview of project
2. Feedback on issues that can be addressed by a greenway design
3. Opportunities for linkages outside of focus area, into BEST, onto Parade Street
4. Next Steps

3:30 PM – 5 PM Extra Time for Touring, revisiting priority sites

Attending: MBI Team on their own

5:30 PM – 7 PM Resident Design Charrette

Attending: MBI team, Aaron Snippert, Erin Carey

Location: New Life and Spirit Revival Center, Erie

Peter/Nick will bring projector and laptop

1. Overview of project
2. 1 Hour – 20 minutes at each station. Break out into 2 or 3 groups.
 - a. Park design (Peter),
 - b. Green Infrastructure/Snow movement (Nick),
 - c. Network Connectivity (Justin)

As far as I know, folks are coming Tuesday except for Steph who is coming Wednesday. Love Your Block is going to deliver flyers tomorrow (weather permitting). I'll keep you updated as more RSVPs come in!

- Linda (Benedictine)
- Priscilla (Benedictine)
- Pat Lupo (Benedictine)
- Cindy (Benedictine)
- Michelle (Count Me In)
- Ray (Count Me In)
- Steph (Count Me In)
- Aaron Kerr (Groundwork)
- Dana Stewart (Byrne Grant- City of Erie)
- Karen from Love Your Block is working on getting some of her family members rallied.

Wednesday, December 21st**9:30 AM Agenda – Prep for Steering Committee**

MBI prep room for Steering Committee

10 AM – 11:30 AM Steering Committee Presentation

Attending: MBI team, Aaron Snippert, Erin Carey, Steering Committee

Location: Room 500, City Hall

1. Overview of project
2. Present findings from Charrette/draft concept – Show each station outcome and concept
3. Feedback on issues that can be addressed by a greenway design
4. Concerns and Opportunities

12:00 – 1 PM Working Lunch

MBI Staff and Key Staff?

1:30 PM – 2:30 PM 2nd Resident Design Charrette

Attending: MBI team, Aaron Snippert, Erin Carey

Location: New Life and Spirit Revival Center, Erie

1. Overview of project for new attendees
2. Presentation of draft concept and feedback from earlier meetings
3. Issues and Concerns/Next Steps

3:00 PM – Debrief with Key Staff

Attending: MBI team, Aaron Snippert, Erin Carey

Location: Room 500, City Hall

Items to bring: Bring a projector, screen, fliers, flip chart

9:00 AM Agenda – Meet with Key Staff

Key Staff: Aaron Snippert, Mindy, and Erin Carey, City Planning

Location: Room 500

1. Review of 2-day schedule
2. Clarify focus area and data needs
Need updated vacant and unsound information
3. How will property identification be handled throughout the project? Process for prioritizing properties.

Vacant lots owned by ERA, Unsound/Vacant,

What level of preservation should we consider? Why is it worth saving?

Parks at different levels is something we can look at.

Identify pockets of vacancy, then alleyways, then roadways. Are there opportunities to utilize the roadways

Surface of hydrology- moves north. Stormwater capture at the north end

Realistically can look at 50 or more over the next 2 years.

4. Context of housing
5. Overview of property acquisition process for MBI team
6. Expectations for Implementation and Phasing Plan. Roads, sidewalks, crossings, Park design by lot, by block etc.

Working Lunch

Joy, LeAnn, Aaron Snippert, Jason Sayers, Sarah Peelman, Erin Carey

- 1) Opportunities to connect vacant lots at mid block
- 2) Opportunities to narrow roads and create entrance to parks or create linear greenspace
- 3) Opportunities to use alleyways.

No flooding issues or capacity issues

CRM Reduction of non-point pollution

Coastal Zone Resilience

Environmental justice

Connected greenspace helps

Great Lakes Regional Meeting was held in Erie. Showed off this project to them while they were in town. Feedback from funder is they are very impressed

E 6th Street is proposed Sharrows. Signal at Ash is going to go away. Can these be used for pedestrian crossing instead?

Chicane is ok but need to show plowing

Mid-block crossing is a problem.

There is opportunity to add bike lanes between curb and sidewalk. 10 foot sidewalk

Easy to request an extension from CRM program. Just ask them in writing.

BEST Discussion

Jeremy and MBI

Identified all of the plans for the 3 Forts project. Soldier and Sailor Home, the old fort there are still artifacts in the ground so it become more of an archeological site, not a new fort here.

Questions about the maintenance of the park.

East 6th Street shared use bike lane

Problem with Ash, it dead ends at Ash. Parade is the main access to 3 Forts and everything else along the Bluff. Look at Parade Street as a multi-modal hub and connect to Front Street

There is a study to expand the trail.

Charrette

Where do residents go?

Access to bus stops

How do you want to use these spaces?

Closing Ash may cut off the north street but not for bike/ped

One way streets will make redirecting at intersections problematic

Community parking lot on vacant lots to help with loss of on street parking. Alleyways may provide better access for closed streets

Desire lines, where to people go and want to go.

Look at what Gannon did

Review Bayview park as a model

Motorized scooters and bikes are a concern

Lighting that dim but brighter with motion. Motion sensor.

Need more eyes on the park

Native plantings

Casual seating for conversations

Connect to existing bike lanes on the Parkway. Safer crossing at E. 6th Street

Accessible bathrooms?

Asbury Woods

Steering Committee

Chuck, AJ, Higgins, Lavery, Snippert, Mindy, Jason, David, Jackie, Renee, Erin. MBI, Leon, Ethan

- 1) Need to ask for a moratorium on repository sales
- 2) Northwest and North South connections are the focus of the design. Get to E 6th and E 10th, Parade.
- 3) Ethan, implementation side? Pedestrian speed bumps as an option? Chuck would be initially against it. Prefer speed table with a more gradual grade.
- 4) Ordinance require concrete in the City so would need to ask for a modification
- 5) Leon, often times will use concrete at the ramp to ensure the grade is met.
- 6) Mid-block crossings
- 7) Talk to police and fire about the plan
- 8) 90 assaults in 1 year.
- 9) Lighting and security cameras. Landscaping to allow open viewsheds into mid blocks
- 10) Contact homeowners once the alignment is further confirmed.

- 11) Would this be done in phases. Doing it block by block phasing allows for neighbors to get excited about this and get on board. But could be a higher cost
- 12) Jackie sees it a reinvestment in the neighborhood.
- 13) North connection is Parade Street
- 14) Policies in place from zoning standards to help promote redevelopment standards. Pattern book.
- 15) Windsheds should be something to consider. Tree breaks can help with the wind.

Charrette #2

MBI + Many

- 1) Need to consider creating public space that is now used by homeless people. How do we address this? No tent city.
- 2) ADA, Accessibility is a concern particularly with all of the crossings
- 3) How do you deal with the park adjacent housing. Fencing and landscaping.
- 4) Connect with bus stops
- 5) Ensure that the park does not cut off the neighborhood, like the Bayfront
- 6) Connections with adjacent initiatives such as ESR, Byrn Grant, BEST
- 7) Designs need to look at how to encourage people to interact with each other
- 8) Bump outs need to accommodate bikes.
- 9) Need to use native plants and trees
- 10) Look at properties along Ash between 12th and 10th. There are other properties that are in poor shape.
- 11) Look at making this publicly available

Next Steps

- 1) Drop in small scale, meet and greet at MCRC. Invitation only.
- 2) Property Conditions - Higgens January 3rd will divide and conquer. 2 weeks January 14th will have updated property list and identified properties
- 3) Check In call on the 13th.
- 4) February 13th Hold for In person.
- 5) Check in with Joy after February check in.
- 6) Repository moratorium (A Snippert)

2nd In-Person Day Schedule and Agenda

2/13/2023

2 Day Schedule

Monday 02/13 Room 500		Tuesday 02/14 Room 500	
10 AM	Meet with Key Staff, City Hall Room 500	10:30 am	Hold for Virtual Meeting with Infinite Erie. Kathy to be in person
10:30 - 11:30	Meeting with Erie Police Department		
11:45 - 1PM	Working Lunch with Steering Committee		
1:30 PM- 2:30	Design Charrette with Residents		
3PM	RACE Board Meeting		
4 PM	Pittsburgh Team heads home or revisits Focus Area		

Monday, February 13th

10:00 AM Agenda – Meet with Key Staff

Key Staff: Aaron Snippert, RACE and Erin Carey, City Planning

Location: Room 500

1. Review of 1 day schedule
2. Identify any outstanding issues
3. Prep for Steering Committee

10:30 – 11:30 AM Agenda – EPD Meeting

EPD: Lieutenant Jamie Russo, Officer Maxwell Brozell, Renee Lamis, Chief Spizarny, Aaron Snippert, and Erin Carey

Location: Room 500

1. Review project purpose
2. Review greenway plan and feedback on issues/areas of concern

11:30 – Kathy to have lunch delivered

11:45 AM – 1:00 PM Agenda – Working Lunch with Steering Committee

Staff Attending: Steering Committee (*add Dana Stewart), MBI

Location: Room 500

1. Review of Planning Process, Schedule Update, Design Issues
2. Review revised greenway plan with steering committee
3. Include update from meeting with EPD

1:30 PM – 2:30PM Design Charrette with Residents/Invite Tim Shannon

Attending: MBI team

Location: New Life and Spirit Revival Center, Erie

Attendees:

- Linda Romey (Benedictine) N/A
- Priscilla Richter (Benedictine) N/A
- Pat Lupo (Benedictine) Maybe
- Cindy Hoover(Benedictine) N/A
- Steph Ciner Yes
- Karen Reyes and Family Yes
- Ferita Dawson Yes
- Katherine Green N/A
- Tim Shannon Yes

1. Review refined design
2. Issues and Opportunities discussion
3. Next Steps

3:00 PM – 4 PM Attend RACE Board Meeting

Attending: MBI Team

Location: City Council Chambers, City Hall

4:00 PM – Design Hub leaves for Pittsburgh or site visit of Focus Area

Tuesday, February 14th

10:30 AM Hold for meeting with Infinite Erie

Hybrid – Kathy to attend in person



WE'RE TURNING **BLIGHT** INTO **BRIGHT**



East Bayfront
Greenway Design
Hosted by RACE

Join us to talk to and work with design professionals to reimagine vacant and blighted spaces into a new greenway and trail for the neighborhood.

TWO DESIGN SESSIONS

Tuesday, December 20
from 5:30 - 7 p.m.

Wednesday, December 21
from 1:30 - 2:30 p.m.

Location



New Life & Spirit Revival Center
315 E. 9th Street
Erie, PA 16503

FOR MORE INFORMATION

intake@redeveloperie.org

(814) 870-1540



www.redeveloperie.org



ESTAMOS REVERDECIENDO LO SECO



Diseño de Vías Verdes
de East Bayfront

Presentado por RACE

Únase a nosotros para hablar y trabajar con profesionales del diseño para volver a imaginar espacios vacíos y deteriorados en una nueva vía verde y vereda para el vecindario.

DOS SESIONES DE DISEÑO

Martes, Diciembre 20
de 5:30-7 p.m

Miercoles, Diciembre 21
de 1:30-2:30 p.m

Ayuda la
Autoridad de
Reurbanización
de la Ciudad
de Erie a

DISEÑAR UN NUEVO PARQUE PARA TU

Vecindario!

Localización



New Life & Spirit Revival Center
315 E. 9th Street
Erie, PA 16503

PARA MAS INFORMACIÓN

admin@redeveloperie.com

(814) 870-1540

www.redeveloperie.org

Steering Committee Agenda

3/28/2023

Topic:	Time:
1. Updates – Kathy Wyrosdick <ul style="list-style-type: none">○ Grant extension request○ Updated Property Conditions of Poor and Unsound properties by CEO○ Finalized layout by Design Hub and reviewed by RACE○ Updates from RACE and CoE	2:30 PM
2. Property Alignment and Summary – Nick Sisco	2:45 PM
3. Draft Design – Peter Q.	2:55 PM
4. Next Steps <ul style="list-style-type: none">○ Concept Plan to Landscape Architect for final design○ Cost Estimate and phasing plan○ Presentation of final plan to RACE Board – End of May○ Groundwork Erie Pilot Project for Summer Green Team – Community Outreach and vacant lot activation (Tentative)	3:20 AM

Steering Committee #3 Meeting summary

March 28th, 2023

2:30 PM – 3:30 PM

Attendees:

MBI: Kathy Wyrosdick, Nick Sisco, Peter Quintanilla

Steering Committee Members: Jackie Spry, Aaron Snippert, Erin Carey, Joy Fronzoli, LeAnn Parmenter, Mindy, Renee Lamis, Andy Zimmerman, Mike Higgins, Mike Lavery, AJ Antolik, Chief Spizarny, Jason, Jake from RACE

1. Kathy W. provided update to the project

- CZM – Grant blanket extension for all awardees has been requested by CZM Coordinator. No final work yet on approval but Joy suggested we move ahead with the revised schedule.
- Code Enforcement – looked at 7 or 8 of the properties listed for the proposed Greenway. They will meet with RACE to review the rest and finalize any issues within the next 2 weeks.
- Groundwork Erie inaugural project will be this project and they are prepared to have the Green Team working in the area on community outreach by July 1st.
- Updates on status of properties will be completed by the code office to ensure that property status is still accurate.
- RACE still looking at working on the greenway properties at one time and not phasing the project.

2. Nick S. reviewed the property status and the logic model

- Mike H and Mike L from the Code office. Andy noted that they are working on violation notices for all properties in the focus area but will start with the ones identified in the plan.
- Mike Higgins noted that one of the properties has been fully rehabbed and will need to be removed from consideration.
- There will be a thorough review of the state of rental inspection and payment of fees for all those properties identified in the registration program. This will be done prior to the next check in with RACE.

Peter – Overview of decision matrix and Proposed Design

- Reviewed design plan scheme, multi-modal connections.
- Illustrative plan description and amenities were discussed throughout the entire system.
- Public Works still has concerns with the mid-block crossing and Peter indicated that most of these have been removed except for the ones on E. 8th street since traffic volume is low and mid-block crossing will help reduce speed along that route.
- Peter also discussed that bulb outs and crossing help to protect on-street parking.

- Lighting and signage throughout the system will be important.
- EPD was glad that Ash Street was no longer proposed to be closed. They will review the road design along with Public Works.

Next Steps and Questions

- Mike, next 2 weeks RACE will refine the list and provide any updates to the MBI Team
- MBI will send PDF of design to Public Works/City for review and comment.

RACE Hold Steering Committee

1. Attendance
 - a. MBI
 - b. Peter and Nick
 - i. MBI
 - c. Chuck Scalise
 - i. City of Erie Redevelopment, Presidents
 - d. AJ Antolik
 - i. Assistant director of public works and parks
 - e. Mike Lavery
 - i. Demolition coordinator
 - f. Mindy
 - i. Property manager
 - g. Jake
 - i. Blighted property Coordinator
 - h. Aaron Snippert
 - i. RACE Executive Director
 - i. Erin Carey
 - i. City of Erie, Neighborhood Planner
 - j. Renee Lamis
 - i. City of Erie, Chief of staff
 - k. Kevin Nelson
 - i. Secretary Treasurer RACE
 - l. Lieutenant Russo
 - i. EPD
2. Overview
 - a. Finalizing Overall Plan
 - b. Phased approach for a greenway
 - c. Taking feedback and handing it to landscape architect
3. Phasing plan
 - a. Start finding what money we can focus on areas
 - b. Start telling a story to increase buy-in
 - c. Phase 1
 - i. 10th Street
 1. Add space on sidewalk and bumpouts
 - a. Bumpouts are space cars should not be parked
 2. Curb Cuts not shown yet
 3. Multimodal approach
 - d. Phase 1 NW Branch
 - i. Connect Center of neighborhood
 1. NorthWest
 2. Using only lots given
 3. Crossing at interscections
 4. More bumpouts
 - ii. Included utilization of alleyways

RACE Hold Steering Committee

- e. Phase 1
 - i. E 6th Street
 - 1. Already has sidewalk, just needs widening
 - 2. Target these
- f. Phase 1
 - i. NE Branch
 - 1. Using alleyways
- g. Phase 2/3 Add. Lots
 - i. Expand Pocket Parks
 - ii. Created a simple linear grid that allows people to see what is happening
- h. Additional Details
 - i. Total of 14 in Phase 1
 - ii. 39 Lots altogether
 - iii. Prioritizing to create a network
 - iv. Can add space as budget allows and with resident feedback
 - 1. Flexibility
 - v. Rental Properties pulled off of plan
 - 1. Direction of redevelopment authority
 - vi. Enhance road networks
 - 1. No roadways closed
 - 2. Enhanced intersection crossings
 - vii. Grant Extension
- i. Feedback and Input
 - i. Redevelopment Authority
 - 1. Wanted a solid plan to build off
 - 2. Avoid displacing people
 - 3. Acquiring properties along corridor and time is seemingly the biggest issue
 - ii. Public Works
 - 1. Majority of midblock crossings taken out
 - 2. They do not believe they are the best
 - a. Needs to look at the midblock crossing on 8th
 - 3. Want it to be a pathway to school
 - 4. Want to look at alleyway usage and how they are proposed and drawn out
 - 5. Will provide a summary of concerns to keep the process moving forward
 - iii. Question on if Alleys will allow car traffic
 - 1. Storm Sewer and other utilities located
 - 2. Remain Vehicle accessible
 - 3. Improve by paving pavement and add internal connections
 - 4. Want to integrate and bring back investment
 - 5. Lots in green can connect alleys
 - a. Would require a midblock between 7th and 8th

RACE Hold Steering Committee

- b. West of ash Ts
- iv. More concerns - EDP
 - 1. Flip pursuits car chases in those alleys
 - 2. Good for public safety
 - 3. More greenspace
- v. Ideas and a price estimate
 - 1. City can modify
- vi. Midblocks
 - 1. Public works will likely not be okay with signing off on anything with a midblock crossing
 - 2. Considered a best practice
 - a. Makes it safer and slows down traffic
 - 3. Attempts to use the alleyway
 - 4. Take it down to Serve Erie lots?
- vii. Next Steps
 - 1. Finalize Deliverable
 - 2. Send to public Works
 - a. Need to know changes soon
 - 3. Once it is passed off
 - a. Get design work
 - b. Get properties
 - 4. Trying to give cost estimate and high-level estimate of lots
 - 5. Roadways enhancement priority
 - 6. Schedule in place for groundwork Erie to help with public outreach?
 - a. Funding there
 - b. Need to communicate
 - 7. July 14th Keystone Greenways Trails and Parks
 - a. Need a budget
 - b. Forwarding details